

TECHNICAL SPECIFICATIONS AUDIPACK "SILENT 6300" Interpreter Booth

Standard dimensions inside (wxdxh):

Table dimensions:

Sound insulation:

Weight: (total: incl. safety-glass and table)

- standard panel
- panel with window
- door panel
- roof element + standard ventilation A
- floor element
- workingtable

Standard colour outside:

Standard colour inside:

- wallpanels
- floor elements and roofpanels

Standard outside dimensions (wxdxh):

- Including floor, roofelements and standard ventilation

1600 x 1600 x 2000 mm
 Standard 1600 x 500 mm
 better than ISO 4043-latest version
 and confirm DIN 56924
 circa 340 kg.

c. 19 kg.

c. 28 kg.

c. 37 kg.

c. 28 kg.

c. 31 kg.

c. 16 kg.

grey 871 (light, appr. RAL 7042)

grey vinyl

grey fireproof carpet

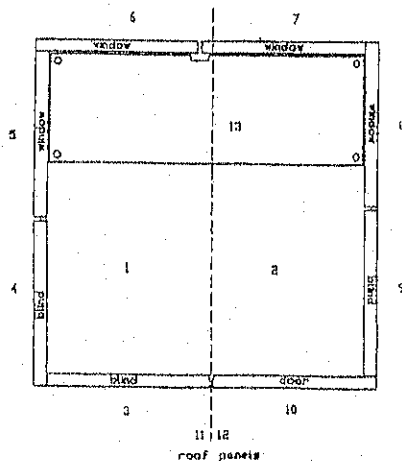
1720 x 1720 x 2280 mm

Note: A Hex key for installation is included.

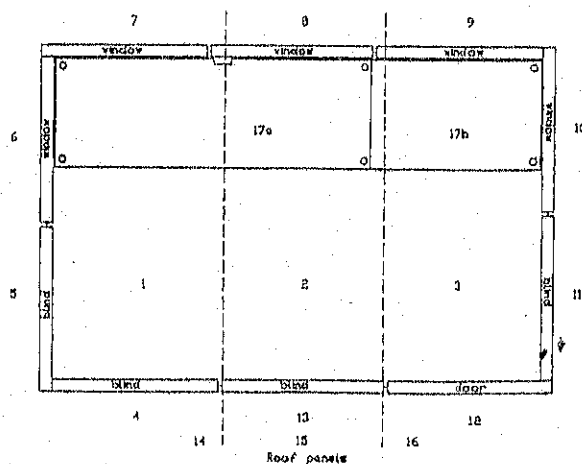
OPTIONS

- 1) Extension set to 2400 x 1600 x 2000 mm
 Including: windowpanel, blindpanel, roofelement, floorelement and table extension 800 x 500 mm
- 2) Table in one piece for 2400 x 1600 mm cabin
- 3) Flightcase for 1600 x 1600 mm booth (2 pieces)
- 4) Flightcase for 2400 x 1600 mm booth (3 pieces)
- 5) Boothcar "easy drive" (2 pieces)
 b) for 2400 x 16000 booth (3 pieces)
- 6) Special ventilation system (System B)
- 7) Plexiglass windows
- 8) Double safety glass

Standard booth



Extended booth



Continuing productdevelopment may result in these data being changed without prior notice.

AUDIPACK also manufactures flightcases/transportcases for technical equipment, components etc. These cases are well known (export to many countries) because of their design and the use of revolutionary, registered, new materials/components. Ask for the special brochures.

TECHNICAL SPECIFICATIONS AUDIPACK "SILENT 9300" Interpreter Booth

Standard dimensions inside (wxdxh):

Table dimensions:

Sound insulation:

Weight: (total: incl. safety-glass, table)

- standard panel
- panel with window
- roof panel + optional ventilation system A
- door panel
- workingtable (50 cm. depth)

Standard colour outside:

Standard colour inside:

- Wallpanels (table to roof) and roof panels
- wallpanels (floor to table height)

Standard outside dimensions (wxdxh):

- including roofolements and standard ventilation

Height: incl. Vent A
incl. Vent B

1600 x 1600 x 2000 mm
Standard 1600 x 500 mm
better than ISO 4043-latest version
circa 210 kg

c. 17 kg.

c. 22 kg.

c. 18 kg.

c. 19 kg.

c. 8 kg.

grey 871 (light, appr. RAL 7042)

white

dark grey

1682 x 1682 x 2041 mm

2118 mm.

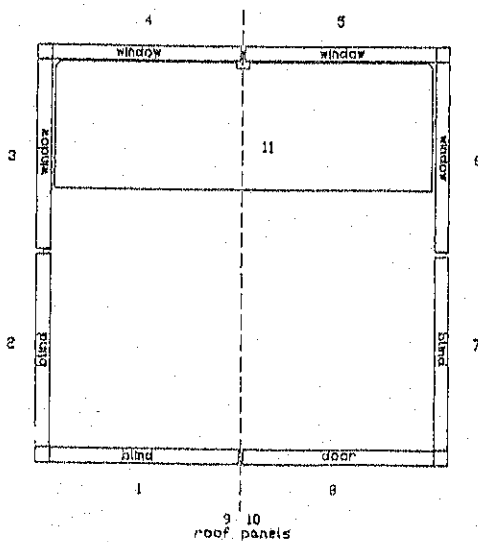
2212 mm.

Note: A Hex key for installation is included.

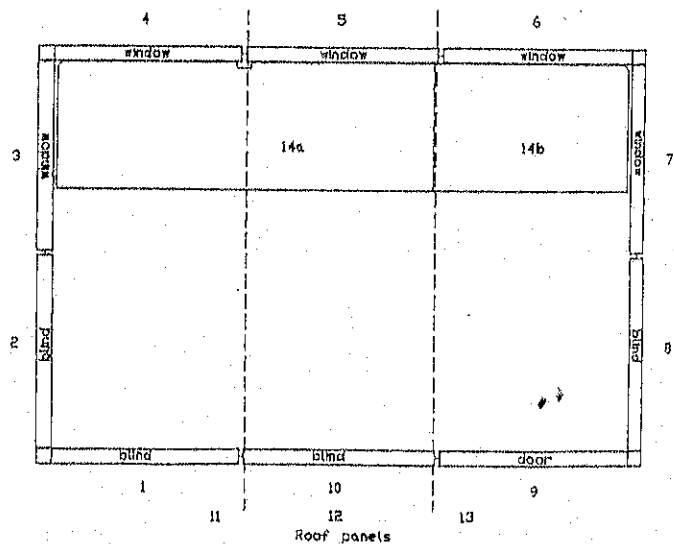
OPTIONS

- 1) Extension set to 2400 x 1600 x 2000 mm
Including: windowpanel, blindpanel,
roofolement and table extension 800 x 500 mm
- 2) Table in one piece for 2400 x 1600 mm cabin
- 3) Flightcase for 1600 x 1600 mm booth
- 4) Flightcase for 2400 x 1600 mm booth
- 5) Boothcar "easy drive"
- 6) Ventilation system A
- 7) Ventilation system B
- 8) Plexiglass windows

Standard booth



Extended booth



Continuing productdevelopment may result in these data being changed without prior notice.

AUDIPACK also manufactures flightcases/transportcases for technical equipment, components etc. These cases are well known (export to many countries) because of their design and the use of revolutionary, registered, new materials/components. Ask for the special brochures.

TECHNICAL SPECIFICATIONS AUDIPACK "SILENT 9500" Super Modular Interpreter Booth

Standard dimensions inside (wxdxh):

Table dimensions:

Sound insulation:

Weight: (total: incl. safety-glass, table)

- panelweight

- workingtable (50 cm. depth)

Booth consists of 15 panels

Standard colour outside:

Standard colour inside:

- Wallpanels (table to roof) and roof panels

- wallpanels (floor to table height)

Standard outside dimensions (wxdxh):

- including roofolements and standard ventilation

Height: incl. Vent A

incl. Vent B

1600 x 1600 x 2000 mm

Standard 1600 x 500 mm

, better than ISO 4043-latest version

circa 210 kg

max. c. 18 kg.

c. 8 kg.

grey 871 (light, appr. RAL 7042)

white

dark grey

1682 x 1682 x 2041 mm

2118 mm.

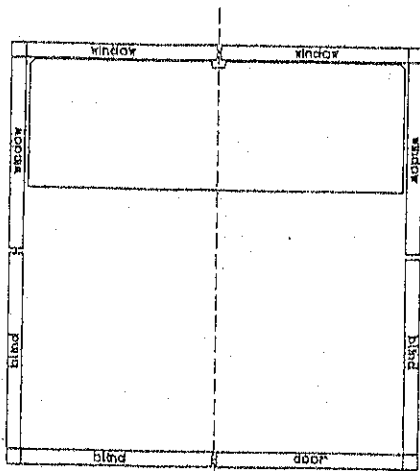
2212 mm.

Note: A Hex key for installation is included.

OPTIONS

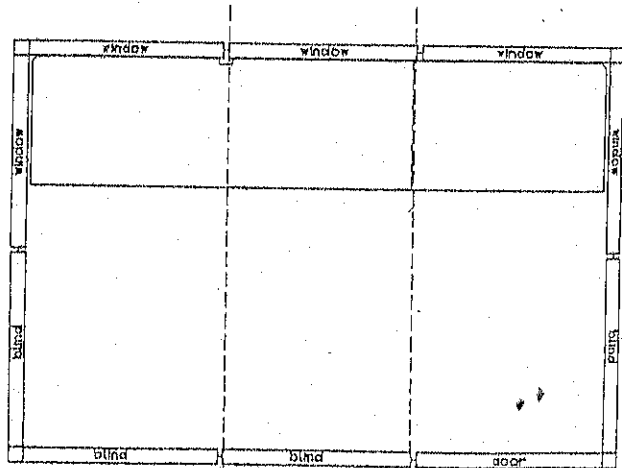
- 1) Extension set to 2400 x 1600 x 2000 mm
Including: windowpanel, blindpanel,
roofolement and table extension 800 x 500 mm
- 2) Table in one piece for 2400 x 1600 mm cabin
- 3) Flightcase for 1600 x 1600 mm booth
- 4) Flightcase for 2400 x 1600 mm booth
- 5) Boothcar "easy drive"
- 6) Ventilation system A
- 7) Ventilation system B
- 8) Plexiglass windows

Standard booth



roof panels

Extended booth



Roof panels

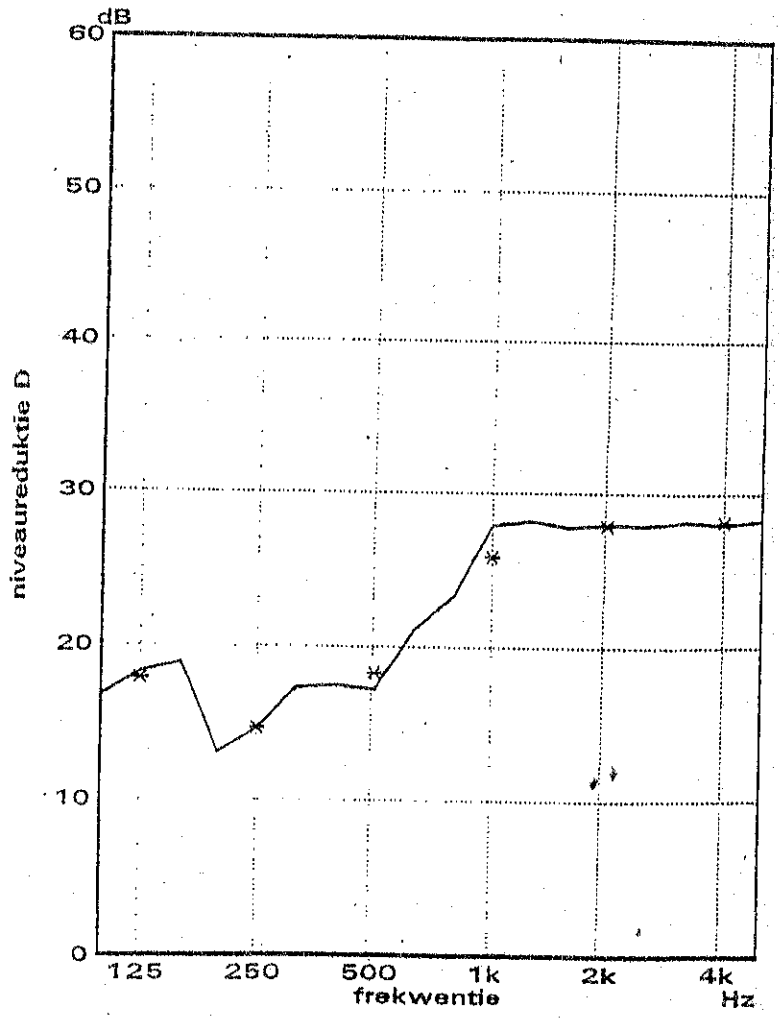
Continuing productdevelopment may result in these data being changed without prior notice.

AUDIPACK also manufactures flightcases/transportcases for technical equipment, components etc. These cases are well known (export to many countries) because of their design and the use of revolutionary, registered, new materials/components. Ask for the special brochures.

METING VAN DE NIVEAUREDUKTIE D
 Opdrachtgever: Audipack Moerkapelle

onderzochte konstruktie: geluidreduktie Silent 9000 MKII

volume zendvertrek: m³
 volume ontvangvertrek: m³
 oppervlak proefwand: m²
 massa proefwand: kg/m²
 gemeten in: praktijk
 signaal: roze ruis
 bandbreedte: 1/3 oktaaf
 Dw (ISO 717): 24 dB



— : 1/3 okt
 * : 1/1 okt

frekw:	125	250	500	1k	2k	4k	Hz
1/1 okt	17.9	14.7	18.3	25.8	27.9	28.2	dB

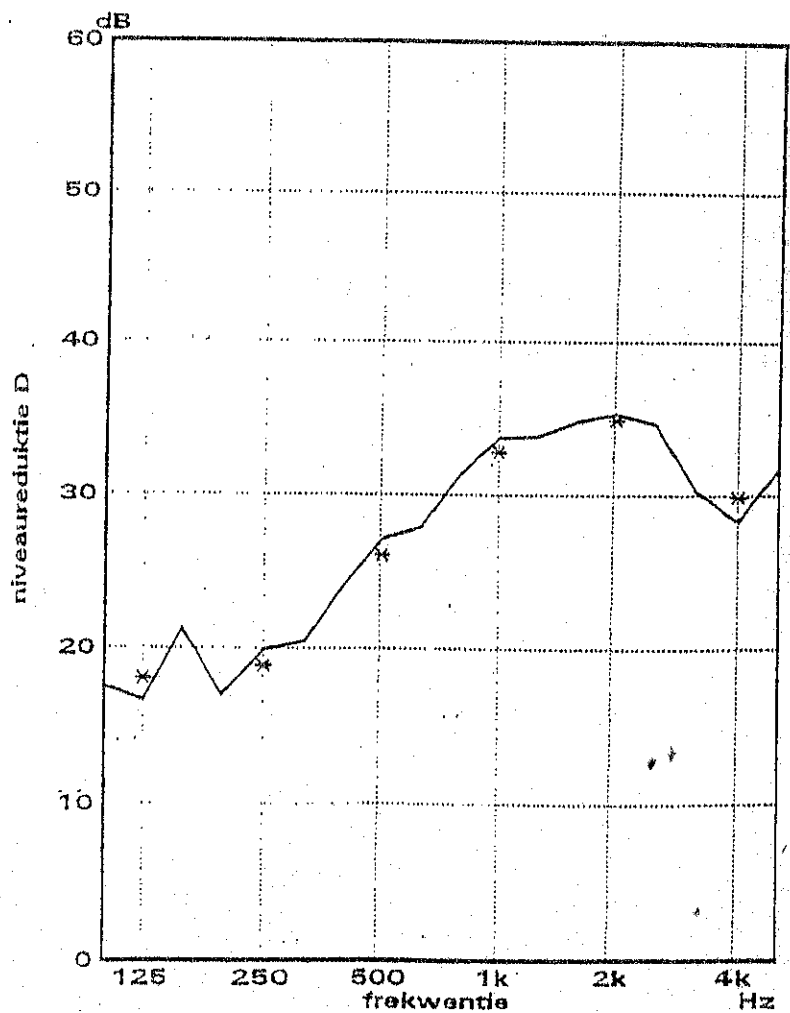
datafile: d1460 S#:2 R#:4 ##: 68

datum: 6-4-93

METING VAN DE NIVEAUREDUKTIE D
 Opdrachtgever: Audipack Moerkapelle

onderzochte constructie:
 geluidreduktie Silent 6000 MKII; ventilatieschuif dicht

volume zendvertrek: m³
 volume ontvangvertrek: m³
 oppervlak proefwand: m²
 massa proefwand: kg/m²
 gemeten in: praktijk
 signaal: roze ruis
 bandbreedte: 1/3 oktaaf
 Dw (ISO 717): 30 dB



— : 1/3 okt
 * : 1/1 okt

frekw.	125	250	500	1k	2k	4k	Hz
1/1 okt	18.0	18.8	26.0	32.8	34.9	29.9	dB

datafile: d1460 SH:2 RH:6 NH: 70

datum: 6-4-93